



SAND FIDDLER

1948



The

Prepared for display by Shannon Adams. Please consider donating to the Carteret County Historical Society, Promise Land Society, Salter Path Heritage Association, Core Sound Waterfowl Museum or charity of your choice (preferably in Carteret County) for these efforts.

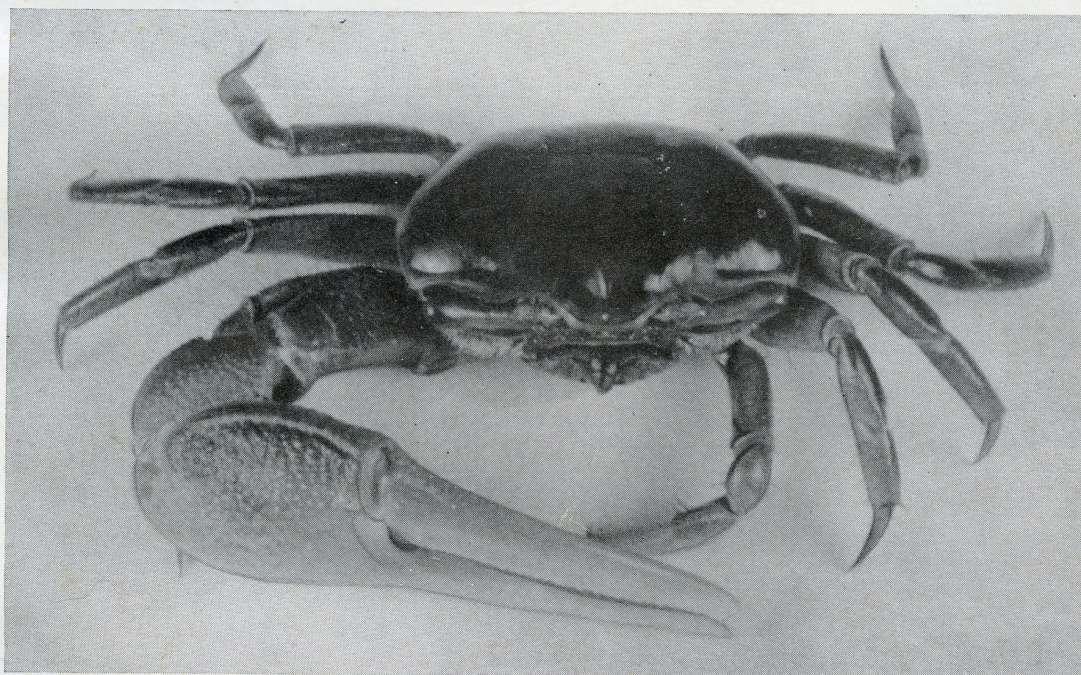
1

9

4

8

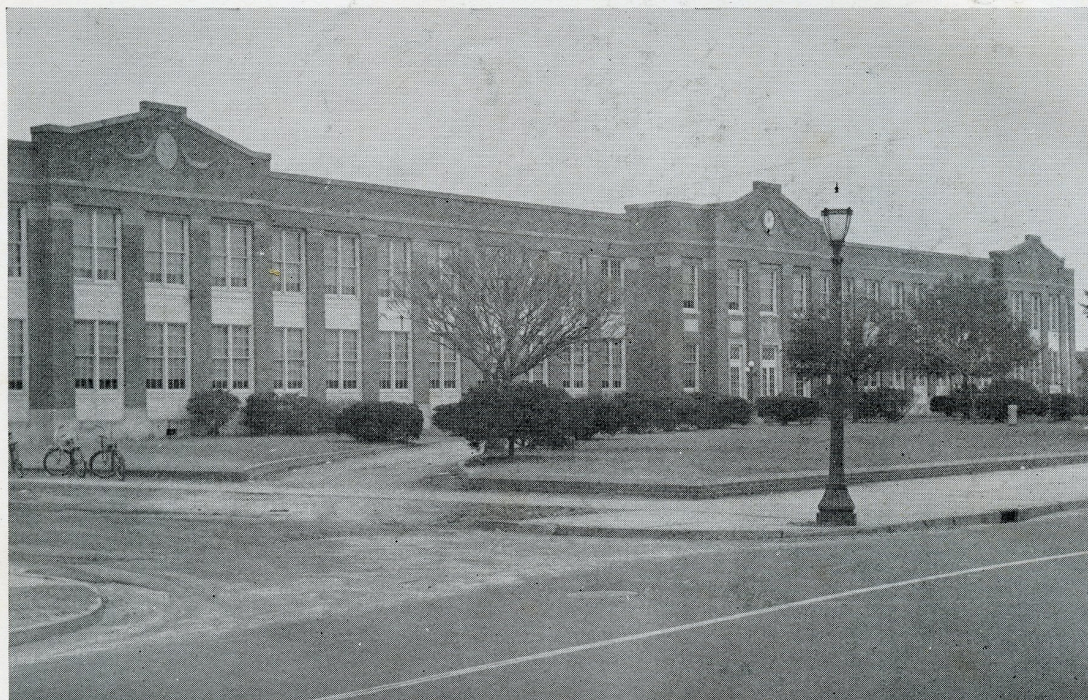
Sandfiddler



Morehead City High School

Morehead City, North Carolina

Morehead City High School



SCHOOL SONG

In the town of Morehead City
Is our High School true;
There the school we'll always cherish
Proudly stands in view.

Sing her praises; lift her chorus
Over hill and dale
Hail to thee, ole Morehead High School;
Hail to thee, all hail.

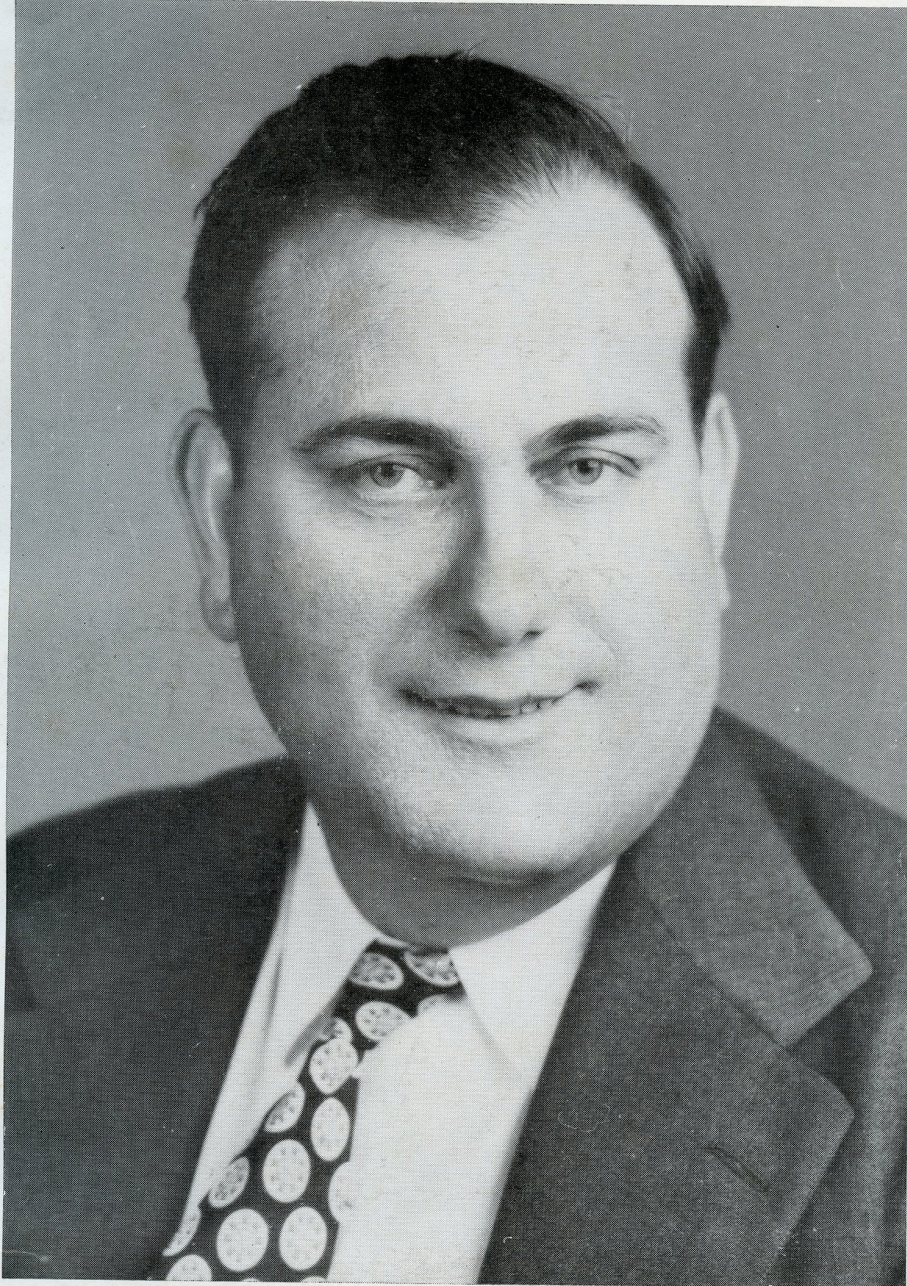


auth 3540

373/
Mo7
Ed/10
1948

373
Mar
1948

J. Thos. Cordova Ed



Dedication . . .

Because he personifies for every student the maximum in sincerity, friendliness, and unselfish service; because he constantly endeavors to promote better athletics and cleaner sports in our school; because he cooperates wholeheartedly in our student interests; and because he has been an integral part of our high school days; we, the Senior Class, proudly dedicate *THE 1948 SANDFIDDLER* to our coach,

MR. GANNON TALBERT

10 Mar 1949



TOP ROW:—Miss Pearl Brinson, Miss Helen Martin—Commercial, Mrs. Helen Baily.

SECOND ROW: Mrs. John Phillips, Mrs. Delfido Cordova.

THIRD ROW: Miss Sarah Hufham, Mr. G. T. Windell—Principal, Mrs. George Springs.

LAST ROW: Mr. Delfido Cordova, Miss Mary H. Wolfe—Music, Mr. Gannon Talbert.

SENIORS





CLASS OFFICERS

President.....MARY SUE TENNEY (middle)
Vice-President.....NORMA LEWIS (left)
Secretary-Treasurer.....RUTH GUTHRIE (right)
Chaplain.....BILL GOODWIN (back)

Class



ROBERT WARD WILLIAMS



ANN WARD WILLIAMS

Mascots

CLASS MOTTO

Faber Est Quisqie Suae Fortunae (Each One Is the Architect of His Own Fortune)

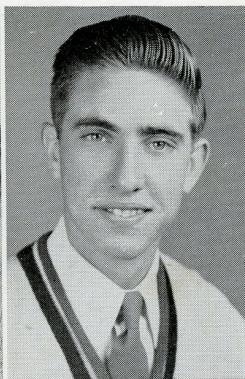
CLASS FLOWER
 Gardenia

CLASS COLORS
 Blue and White

CAROLYN BALLOU

F. H. A., '46, '47, '48; Senior Superlative.

Carolyn reminds us all of those people who get a kick out of just living and having fun.



J. G. BENNETT

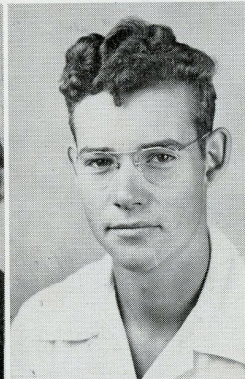
Basketball, '45, '46, '47, '48; Band '45, '46, '47; Baseball '45, '46, '47, '48; Hi-Y, '45, '46, '47, '48.

J. G. always has a snappy comeback to anything and everything.

GENEVA BRUTON

F. H. A., '45, '46, '47, '48.

Geneva has proved herself to be a good friend to everyone.



EDWARD CAMPBELL

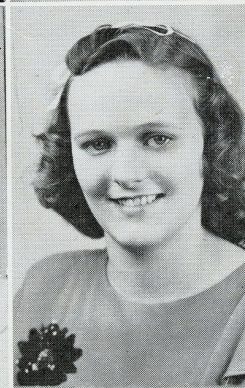
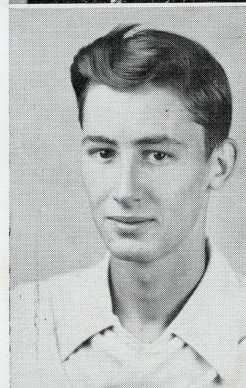
Transferred from Swansboro High School.

Edward's hobby is pets. Last year he had a baby . . . Alligator.

NOLAN DAVIS

Transferred from New Bern High School.

He's quiet but always has his mind on what is going on.



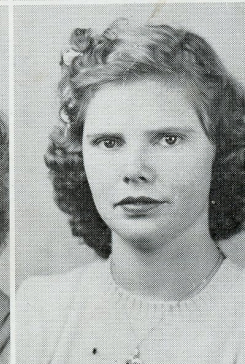
MARGARET EDGERTON

Library Club, '46, '47, '48.

Though quiet, this young girl is very devoted to her class mates.

NAOMI EUBANKS

Quiet and reserved, she does a good job in all she undertakes.



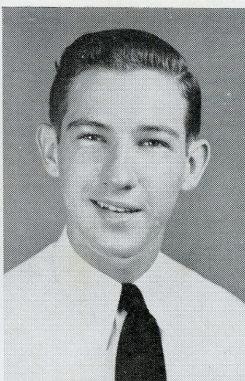
VERONA EUBANKS

A hard worker, this girl will get whatever she goes after.

JEAN FARRIOR

Transferred from Washington High School. Glee Club, '47, '48; Beta Club, '48; Annual Staff, '48; Library Club, '46, '47.

With your beautiful voice, Jean, we hope you will go far in the field of music.



BILL GODWIN

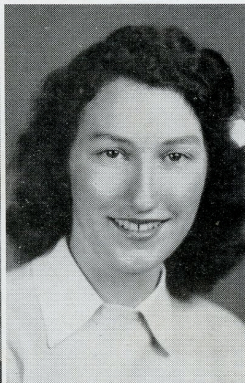
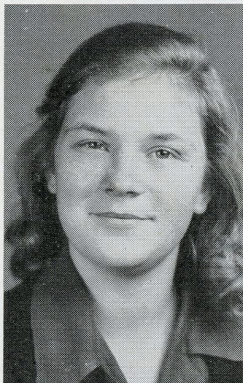
Student Council, '45, '46, '47, '48; Band, '45, '46, '47, '48; Hi-Y, '45, '46, '47, '48; President, '48; Beta Club, '48; Class Officer, '44, '45, '48; Superlative.

Bill with his ability and personality will go far in the business world.

GLORIA GUTHRIE

Glee Club, '47, '48; F. H. A., '46, '47, '48; Library Club, '46, '47, '48.

Gloria will always be remembered for her sweet disposition.



RUTH GUTHRIE

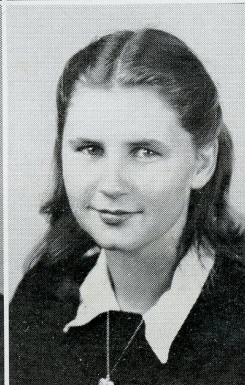
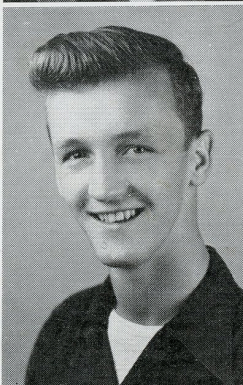
Basketball '45; Hi-Y, '45, '46, '47, '48; Library Club, '45, '46, '47; Class Officer, '45, '46, '47, '48; Superlative.

We know that Ruth will go far with her intelligence and sweet personality.

J. D. HELMS

Basketball, '45, '46, '47, '48; Superlative.

J. D. is usually available for a joke.



RILLA HUGHES

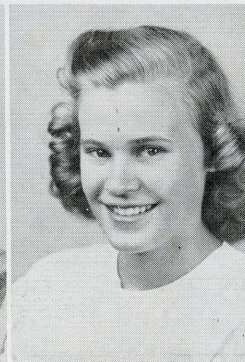
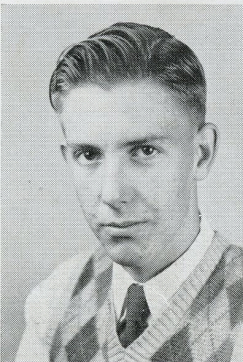
Hi-Y, '46, '47, '48; Glee Club, '45, '46, '47, '48; Basketball, '45, '46, '47, '48; Home Ec. Club, '45, '46, '47, '48; Majorette, '47, '48.

We will always remember this amusing girl and her love affairs.

SIDNEY LENTZ

Hi-Y, '46, '47, President, '48; Beta Club, '48; Student Council, '47, '48; Class Officer, '45, '46, '47.

Sidney is a very studious boy. We wish him luck in his career of engineering.



JANICE LEWIS

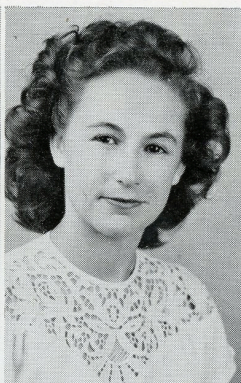
Glee Club, '44; Basketball, '44, '45; Library Club, '44, '45, '46, '47; Hi-Y, '47, '48; Cheer Leader, '45, '47; Superlative.

She's blonde, she's cute, but she doesn't prefer Carolina to Duke.

MARIAN LEWIS

Home Ec., '45; Class Officer,
'47; Glee Club, '45, '46.

The born poet.



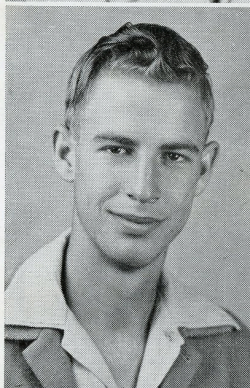
NORMA LEWIS

F. H. A., '46, '47, '48; Class
Officer, '48.

*She's shy, but possesses a
nice quiet manner that is
pleasing.*

MANLY LOCKHART

*Manly is a very loquacious
boy!*



BILL MARKS

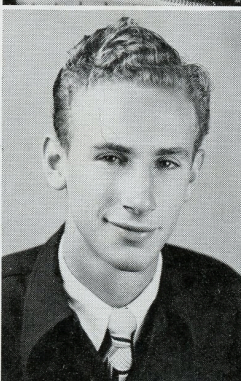
Hi-Y, '47, '48; Manager Bas-
ketball, '48; Baseball, '45,
'46, '48; Superlative.

*We wish Bill all the luck in
the world in becoming the
future football coach of
Carolina.*

MARY ALLEN MILLER

Hi-Y, '46, '47, '48; Glee Club,
'44, '45; F. H. A., '45, '46,
'47, '48.

*Mary Allen is a friendly girl
with a nice smile.*



TARVER MCKNIGHT

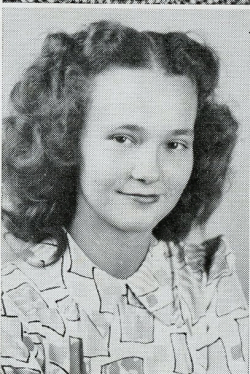
Hi-Y, '45, '46, '47, '48; Base-
ball, '43, '44, '45, '46, '47,
'48; Basketball, '44, '45,
'46, '47, '48; Annual Staff;
Superlative.

*We feel proud of our cap-
tain, who has led us to
many victories in basket-
ball.*

EDITH MORSE

Hi-Y, '46, '47, '48; Beta Club,
'48; Band, '45, '46.

*This immaculately dressed
girl may be found anytime
... studying her French
lesson.*



ANITA NELSON

Glee Club, '44, '45; Beta
Club, '48.

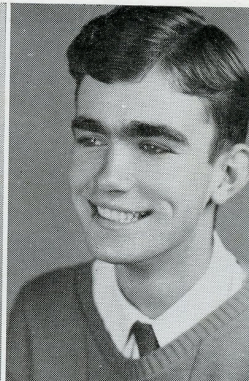
*Anita is a very conscientious
girl who can be depended
upon.*

MARIANNE PATE

Glee Club, '44, '45; Library Club, '45, '46; Beta Club, '48; Cheer Leader, '46, '47, '48; Hi-Y, '45, '46, '47, President, '48; Annual Staff, '48; Class Officer, '45, President, '46, '47 President; Student Council, '45, '47, President.

A leader in all she does.

Good luck in your studies at Meredith next year.



DUFFY PAUL

Annual Staff, '48.

Duffy is a boy with a good disposition and is always anxious to do his part.

GRACE PINER

Hi-Y, '45, '46, '47, '48; Majorette, '45, '46, '47, '48; Student Council, '46; Beta Club, '48; Library Club, '45; F. H. A., '48; Annual Staff, '48; Glee Club, '45, '46.

Grace's personality of distinction should go far in helping her to become successful.



JAMES RABON

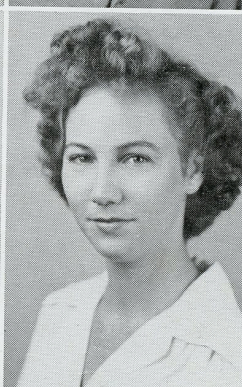
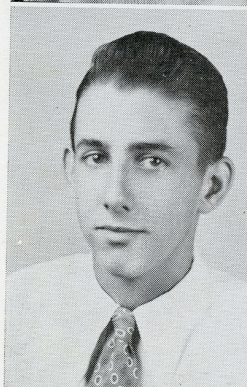
Band, '45, '46; Baseball, '45; Basketball, '46, '47, '48.

This lad has a yen for three months of the sea.

DERL ROBERTS

Class Officer, '46.

One of our fastest boys.



MARY ETHEL SEAMON

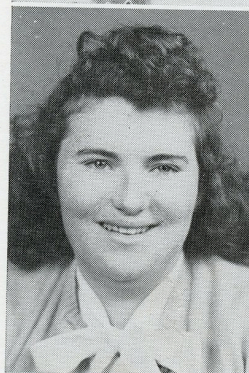
Glee Club, '45, '46.

This hard working girl hopes to become a nurse.

KATHRYN SWINDELL

Glee Club, '44, '45; F. H. A., '46, '47, '48; Library Club, '44, '45, '46, '47.

Kathryn performs her duties diligently.



MARY SUE TENNEY

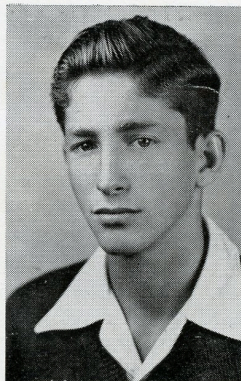
Annual Staff Editor-in-Chief; Library Club, '46, '47; Band, '45, '46, '47; Glee Club, '47, '48; Beta Club, '48; Hi-Y, '46, '47, '48; Class Officer, '46, '47, '48, President; Superlative.

Our class president which any group of seniors would be glad to follow.

ALTON VICK

Superlative Hi-Y, '47, '48;
Basketball manager, '47,
'48; Transferred from Rose
Hill High School.

*When you get to know
Buddy, blue Mondays are
a thing of the past.*



DEELLA WADE

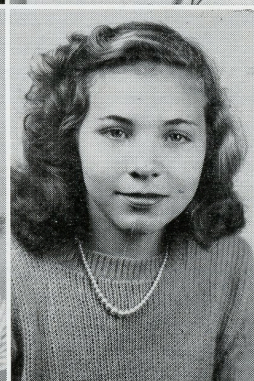
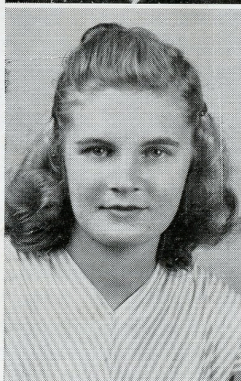
Class Officer, '45; Glee Club,
'45, '46; F. H. A., '45, '46,
'47; Hi-Y, '45, '46, '47, '48;
Majorette, '45, '46, '47, '48;
Superlative; Basketball, '45,
'46, '47, 48.

*A girl who loves basketball
and Clarence.*

LUKEVIA WADE

Hi-Y, '45, '46, '47; Glee Club,
'45, '46, '47; Basketball,
'45, '46; Library Club, '46,
'47, '48; F. H. A., '45, '46,
'47, '48; Beta Club, '48;
Superlative.

*Our best wishes go with
Lukie in her career of
nursing.*



NELL WALKER

Transferred from Leaksville
High School.

*We will probably meet Nell
later as a beauty operator.*

CAROLINE WILLIS

Library Club, '45, '46, '47,
'48; F. H. A., '47, '48; Glee
Club, '48.

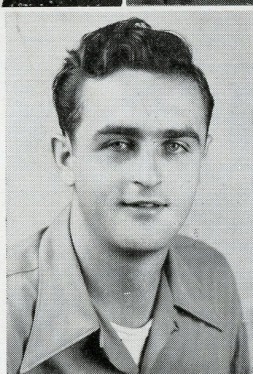
*Quiet and pleasant describes
Caroline very well.*



GWENDOLYN WILLIS

Transferred from Maury High
School, Norfolk, Va.; Su-
perlative.

*Charm, humor, and poise are
but a few of the many
pleasing attributes of this
popular girl.*



CLARENCE WILLIS

Basketball, '46, '47, '48; Hi-
Y, '45, '46, '47, '48; Bas-
ketball Manager, '45.

*Just give him an old car to
repair and he's happy.*

SENIOR CLASS HISTORY



The Senior Class is a narrative of the events which occur during the high school life of the Seniors.

Perhaps it was only coincidental that the two freshmen teachers were men, Mr. Mason and Mr. Talbert, or perhaps it was because our kindhearted principal, Mr. Joslyn, refused to burden the women with such impetuous bits of humanity. But it did not take long for them to realize that it was unwise and unsafe to tantalize the teachers in any way, particularly to pull the tail feathers from Mr. Mason's stuffed birds. Having learned this first and most important lesson, we youths and maidens became students and settled to master the fundamentals of high school techniques.

From freshmen we progressed to the advanced stage of sophomores, at which time it became necessary for us to assume a more dignified manner. Although we had not yet obtained all the education befitting our standing, we felt our importance and tried our best to act like ladies and gentlemen. Despite our efforts at good behavior, we slipped up a few times. Our loquacious ability left Mr. Chadwick, a new teacher at this school, with the impression that he should never have become a teacher, and, as a last resort, he joined the army.

When we had acquired the standing of juniors, we really began to feel as if our every obnoxious wish was law. Of course, the seniors were still present, but as jolly-juniors we were having the time of our lives, and topped off the year with the Junior-Senior Banquet and the Junior-Senior Picnic. Despite all the fun, we learned this year that it was a necessity to be courteous and respectful to our teachers. With this lesson in mind, our efforts were renewed toward the achievement of this goal.

Finally, we reached the height of our ambition. After twelve years of labor and fun, we were the Seniors of the Morehead City High School. And, what seniors were were! At least half of Mrs. Baily's salary was spent for the purpose of easing headaches caused by the class. The outstanding events of this year, the most significant of all years, were Junior-Senior Banquet, publication of the *Sandfiddler*, Senior play, Baccalaureate Service, and the most momentous one, GRADUATION.

Before this history is closed, the Historian reminds all seniors that tomorrow they will enter upon life in a glad, bright, glorious world—Freshmen in the life of school—and, now, we leave with the hope that Morehead City High School is a better place for our having spent four years here.

SENIOR PROPHECY



The time is 1948. The place is Madame Salome's; she is a famous fortune teller. The crystal ball is slowly clearing, and we breathlessly wait to see what the future holds for the Senior Class of 1948. First we see a telephone switchboard and far down the line we see Edith Morse. She is putting through a call for Margaret Edgerton, who now owns the "Edgerton Store" on Arendell Street. Next, we see Watts Hospital and coming down the steps is Lukevia Wade, the modern Florence Nightingale. She is going to the laboratory where Sidney Lentz, the famous scientist, is working on a new discovery. Two other nurses working at the hospital are Caroline Willis and Kathryn Swindell. As we walk in a drug store for a coke and newspaper, who should be behind the counter but Mary Allen Miller. As we look through the newspaper, several names catch our attention. J. G. Bennett and Clarence Willis, the two promising young lawyers, are now working on their first important case. Here on the sports page we see the familiar faces of Bill Marks, the outstanding football star, and J. D. Helms, the nation's No. 1 basketball player. On the woman's page is an editorial written by Mary Sue Tenney, the journalist who writes of life in general.

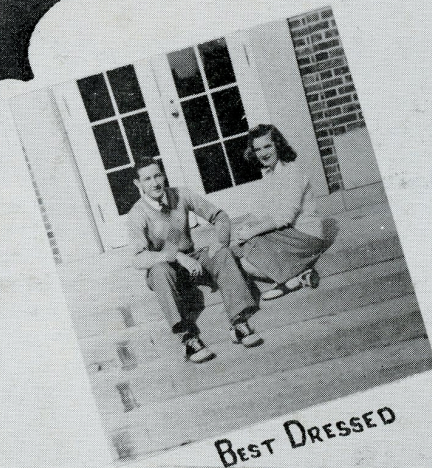
The scene now changes and we see Grace Reel Piner, director of a teen-age center in New York. She is being greatly assisted by one of the Sampson boys. We see another large city and there is Jimmy Rabon, the great philanthropist of Miami Beach. Basking on Miami Beach we see Mary Ethel Seamon and Marianne Pate. They are very prominent in the Miami society circles. And who is this yelling, "Popcorn, peanuts, hotdogs"? It can be none other than Duffy Paul and Derl Roberts. After many attempts at work, they found this the easiest way to earn their living. Our attention is suddenly attracted to the sky where a stunt flier is showing his daring ability. After some inquiries we find it is our classmate, Buddy Vick.

Once more the scene changes to an opera in Paris where the featured star is Rilla Hughes. And who is that distinguished looking gentleman in the second row? It is Bill Godwin, the interpreter for the American Ambassador to France.

Now across the Atlantic to our beautiful country. Speaking of beauty there's Gwen Willis and Jeane Farrior, the school teachers, going into Nell Walker's "Beauty Shoppe" for shampoos and facials. Next door to the Beauty Shoppe is "Rose's Store" where Marian Lewis is assistant manager. Now for a ride in the country. What is this, an alligator farm? Just as we suspected, Edward Campbell now raises baby alligators! Next to Edward's farm we find a beautiful horse farm owned by Marietta O'Donnell. On our ride back into town we turn on the radio to WMBL. The announcer is Tarver McKnight, taking advantage of the freedom of speech. Then we hear a duet by the Eubanks sisters, Naomi and Verona. There is then the announcement that the station has hired two new script writers, Gloria Guthrie and Anita Nelson. The next commercial announces the opening of the "L and D Drive In" owned by Manly Lockhart and Nolan Davis. There is also another new establishment in Morehead. It is owned by DeElla Wade who specializes in making gabardine suits. By the news reports we get the impression of another war in the near future. That accounts for the three girls we see standing in front of the U. S. O. waiting for the sailors to land. You guessed it! They are Carolyn Ballou, Geneva Bruton, and Norma Lewis. That takes care of all but two members of the class of '48. But we know that Janice Lewis is still waiting for Joe to finish college, and the Early bird gets Ruth Guthrie.

Seniors

Achievements

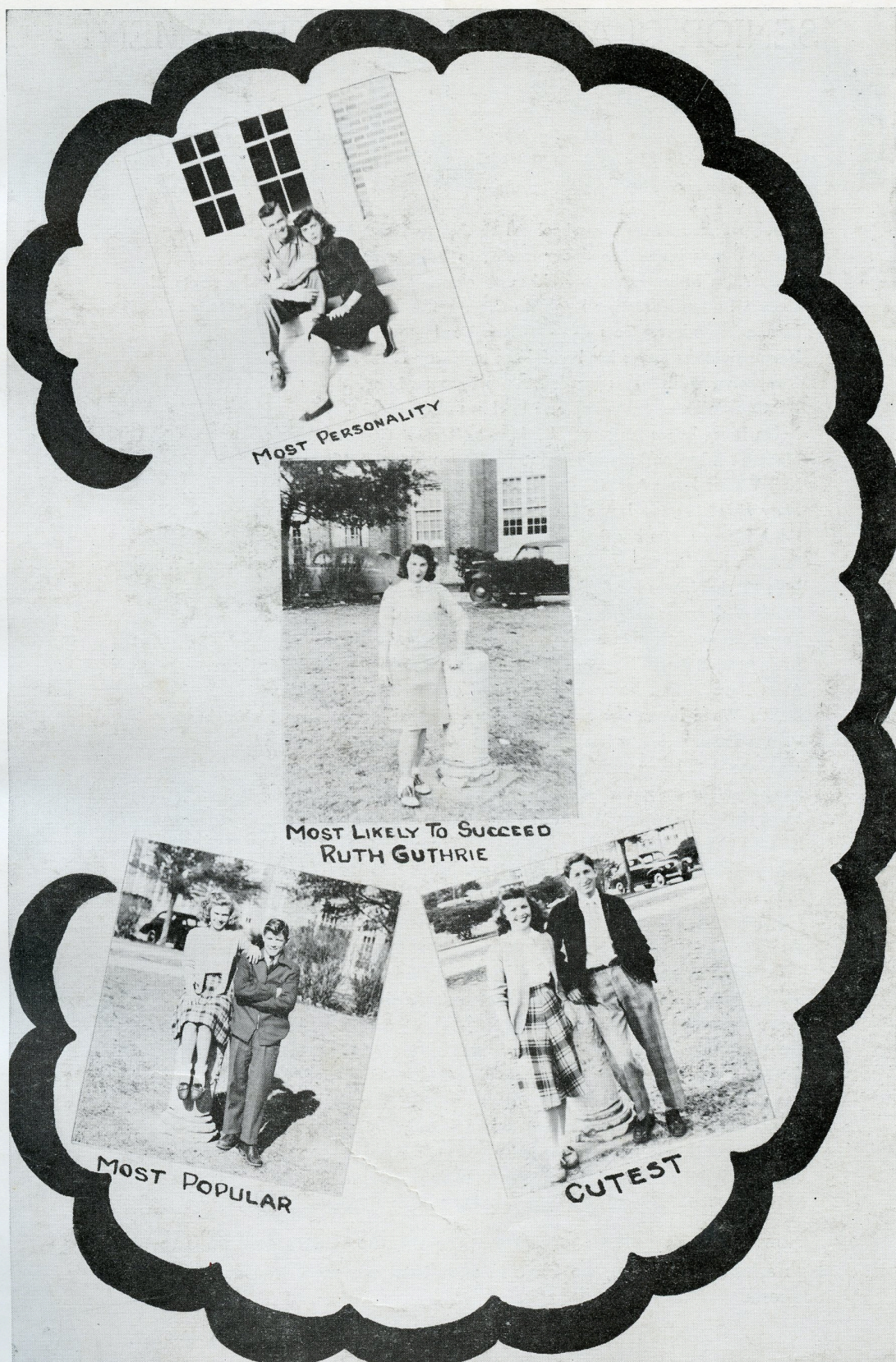


BEST ALL AROUND
MARY SUE TENNEY



MOST ATHLETIC

Best Dressed—BILL GODWIN AND LUKEVIA WADE.
Most Athletic—TARVER MCKNIGHT AND DE ELLA WADE.



Most Personality—J. D. HELMS AND CAROLYN BALLOU.

Most Popular—JANICE LEWIS AND BILL MARKS.

Cutest—GWENDOLYN WILLIS AND BUDDY VICK.

SENIOR CLASS WILL AND TESTAMENT



We, the members of the Senior Class of 1948, having prepared ourselves for graduation from Morehead City High School, do leave the following Bequests to the Underclassmen of said School:

Carolyn Ballou leaves her school-girl crushes to Dawn Wetherington.
Norma Lewis leaves her ability to sing to Billy Joyce Watson.
Mary Allen Miller leaves her old nasty chewing-gum to anybody who wants it!
Geneva Bruton leaves her height to Greta Willis.
Marian Lewis leaves Tom — — — Poor Tom!
Naomi Eubanks leaves her bashfulness to Nancy Derrickson.
Gwendolyn Willis leaves her dancing to Imogene Long.
Bill Godwin leaves his promptness to class to Lois Webb.
Nolan Davis leaves his broad shoulders to Tommy Cordova.
Margaret Edgerton leaves her quiet manner to Mildred Hill.
Nell Walker leaves her Southern accent to Shepard Sampson.
Mary Ethel Seamon leaves her Aunt Therese to Billy Fulcher.
Edith Morse leaves her figure to Lucille Wright.
Ruth Guthrie leaves her treasury books, records, and blank checks to Therese Whealton.
Rilla Hughes leaves her fickle ways to June Jones.
Buddy Vick leaves his good looks to Berl Ray Lewis.
Tarver McKnight leaves his athletic ability to Donald Davis.
J. G. Bennett leaves his attendance record in sociology to Buck Matthews.
Anita Faye Nelson leaves her "Peaches" to Marjorie Ann Stone.
DeElla Wade leaves her ability to play basketball to Jo Anne McKnight.
Verona Eubanks leaves her flirty ways to Vera Guthrie.
Marianne Pate leaves her love for the "Indian Yell" to Lois Simpson.
Mary Sue Tenney leaves her sense of humour to Sadie Davis.
Jeane Farrior leaves her "Art" ability to the next Art Editor of the SANDFIDDLER Annual.
Edward Campbell leaves his crow to anyone who wants it.
Lukevia Wade leaves her pleasant operator "please" to Elsie Willis.
Bill Marks leaves many broken hearts.
Caroline Willis leaves her curls to Mary Anne Merrill.
Kathryn Swindell leaves her ability to make milk shakes to Jerry Guthrie.
J. D. Helms leaves his "Jitterbuging" to Robert Gaskins.
Sidney Lentz leaves his speedy use of words to Ralph Sterlen.
Janice Lewis leaves her cute personality to Mary Robinson.
Manly Lockhart leaves his quotations of "Shakespeare" to Edgar Simpson.
Duffy Lee Paul leaves his "that's true" to Dick Spears.
Grace Piner leaves her good English grades to Dick Prather.
Jimmy Rabon leaves his wolfishness to Budly Baily.
Derl Roberts leaves his love for Latin to Mitchell Burge.
Clarence Willis leaves his "new" cars to Wilbert Jenkins.
Marietta O'Donnell leaves her horsemanship to Grace Oglesby.

Now, as the day draws very near when we, the seniors, will have to bid our high school days adieu, we leave in your trust our most treasured and favorite bequests.

THE SENIOR CLASS

UNDERCLASSMEN



✻



JUNIOR CLASS

TOP Row: Waldron Baily, Robert Bell, Tommy Cordova, Jean Cunningham, Donald Davis, Sadie Davis, Nancy Derrickson.

SECOND Row: William Fulcher, Robert Lee Gaskins, Jerry Guthrie, Vera Guthrie, Sherman Hawks, Mildred Hill, Wilbert Jenkins.

THIRD Row: June Jones, Alex Lewis, Berl Ray Lewis, Ray Lewis, Kemp Lockhart, Imogene Long, Weldon Matthews.

FOURTH Row: Joan McKnight, Mary Ann Merrill, Margaret Mitchell, Thompson Morse, Luther Norris, Grace Oglesby, Bobby Robinson.

FIFTH Row: Mary Robinson, Shepard Sampson, Edgar Simpson, Jimmy Smith, Richard Spears, Ralph Sterlen, Marjorie Stone.

JUNIOR CLASS



TOP Row: Benjie Swinson, Billy Joyce Watson, Lois Webb, Dawn Wetherington, Therese Whealton, R. A. Williams, Ashton Willis.

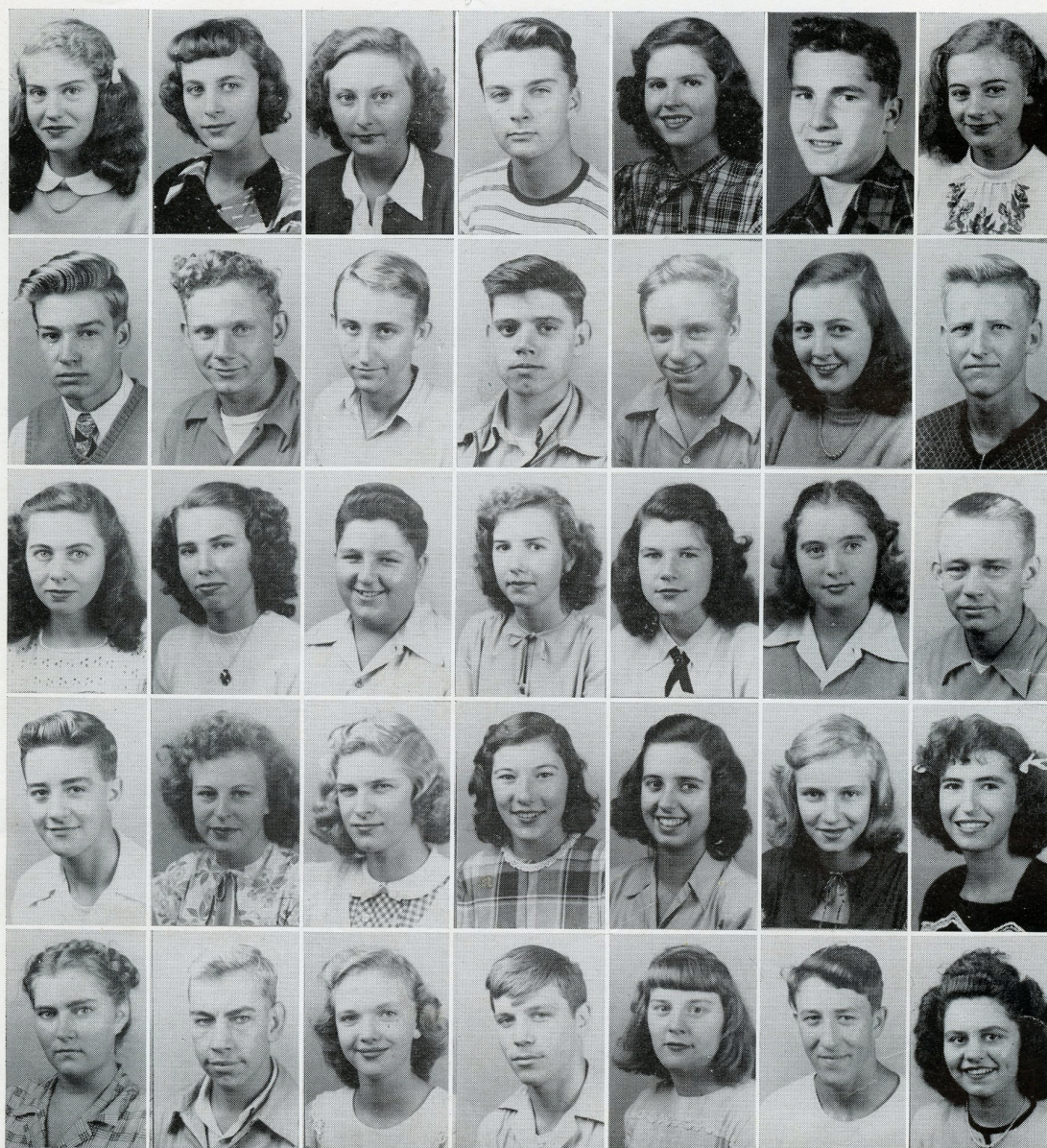
SECOND Row: Elsie Willis, Giles Willis, Greta Willis, Gwendolyn Willis, Harry Willis, Jo-Jayne Windell.

THIRD Row: Lucille Wright.

JUNIOR CLASS OFFICERS

LOIS WEBB	<i>President</i>
MARY ROBINSON	<i>Vice-President</i>
IMOGENE LONG	<i>Treasurer</i>
JUNE JONES	<i>Secretary</i>





SOPHOMORE CLASS

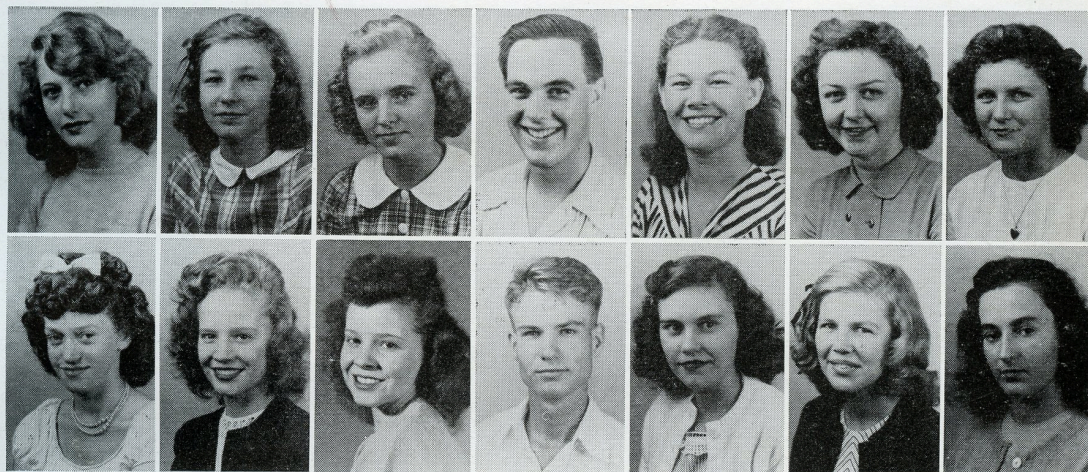
FIRST ROW: Mary Lee Arthur, Jane Ballou, June Bloodgood, Bobby Bowers, Ida Mae Broadhurst, Herman Burroughs, Mavis Cannon.

SECOND ROW: Guy Paul Dixon, Tom Eaton, Elvin Franks, Harvey Gaskins, George Harker, Jane Howerton, Darrell Huffmam.

THIRD ROW: Claudette James, Evelyn Jenkins, Jimmy Johnson, Jane Jordan, Peggy Leary, Betty Clyde Lewis, Willie Lewis.

FOURTH ROW: Charles Macy, Mary Ruth McKnight, Betty Jo Midgett, Patricia Morris, Ann Oglesby, Syble Oglesby, Frieda Robinson.

FIFTH ROW: Charlene Salter, Prentice Salter, Lois Simpson, Ray Smith, Ethel Smith, Eugene Steed, Colleen Swinson.



FIRST ROW: Helen Taylor, Betsy Thornton, Betsy Wade, L. E. Wade, Bertie Warren, Ann Willis, Barbara Willis.

SECOND ROW: Elva Willis, Ina Willis, Ona Willis, Johnny Willis, Ruth Willis, Sherry Willis, Shirley Willis.

SOPHOMORE CLASS OFFICERS



ANN OGLESBY (middle).....*President*
 JANE BALLOU (right).....*Vice-President*
 JANE JORDAN (left).....*Secretary-Treasurer*



FRESHMAN CLASS

TOP Row: Bettie Adams, Shirley Barefoot, Anna Lee Bell, Pattie Jean Bell, Jean Bowles, Mitchell Burge, Jean Davis.

SECOND Row: Harold Deibert, Mary Eaton, Bobby Eubanks, Shirley Farrior, Donald Fitzpatrick, Harry Fitzpatrick, Henry Frost.

THIRD Row: Crump Fulcher, Arnette Garner, Nannie Garner, Perry Gorham, Helen Guthrie, Toby Charles Guthrie, Tommy Guthrie.

FOURTH Row: Richard Griffin, Anna Belle Hall, Douglas King, Marlene Kittrell, Suzanne Land, Bobby Lawrence, Bobbie Ann Lee.

FIFTH Row: Gloria Lewis, William Lloyd, Juanita Mason, Laurah Mitchell, Plymouth Moore, Joe Morris, Alice Mualem.



FRESHMAN CLASS

TOP Row: Geraldine Nelson, Judith Perry, Hilma Piner, Elbert Pittman, Wallace Rhodes, Sarah Robinson, Sophia Rose.

SECOND Row: Charles Smith, Vance Ward, Tommy Wetherington, Barbara Willis, Lena Willis, Shirley Willis, Sue Willis.

THIRD Row: Violetta Willis, Vincent Wright, Richard Yeager, Robert Yeager.

FOURTH Row

CLASS OFFICERS

JANE BOWLES, CURTIS WILLIS, RAY GILLIKIN





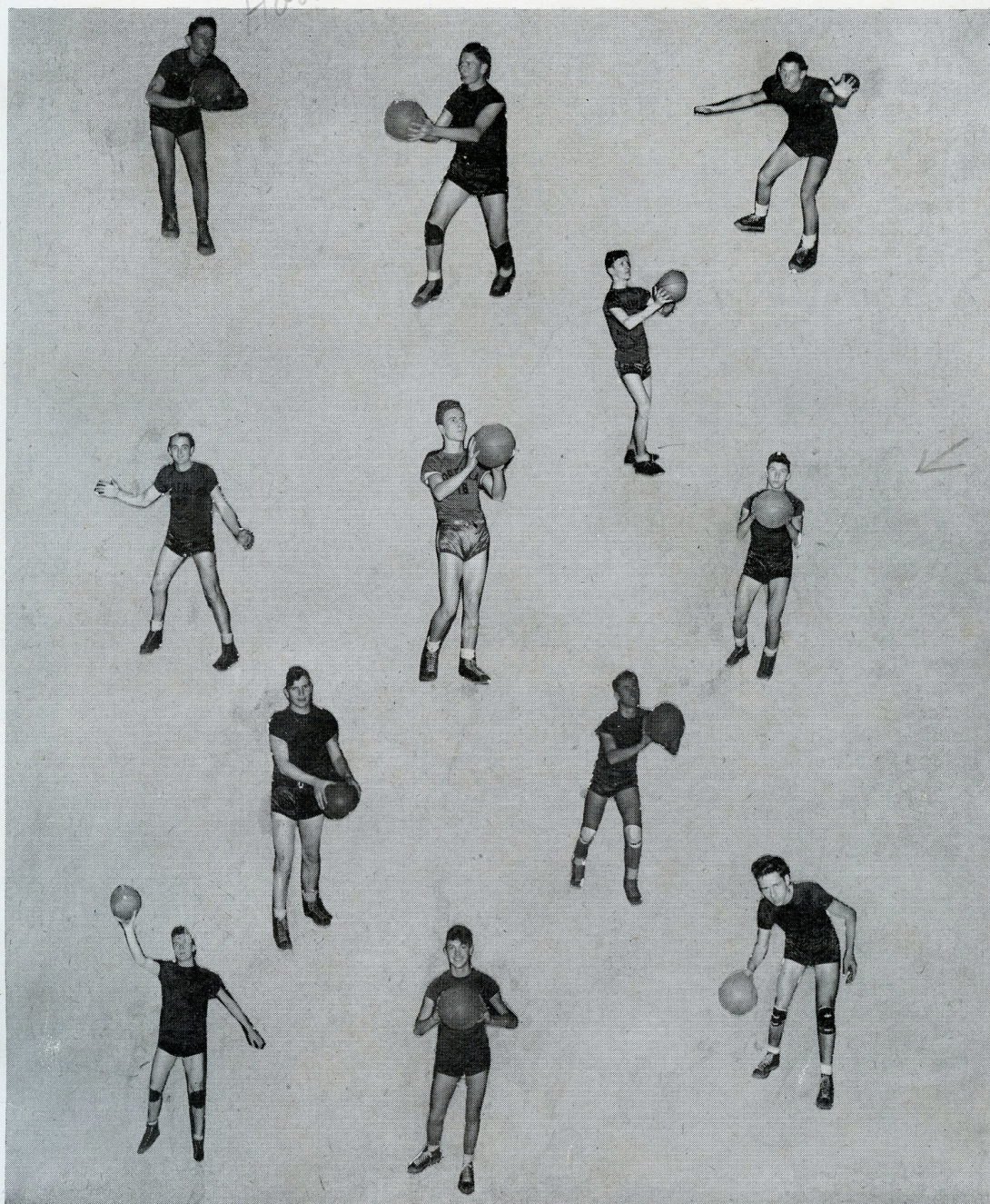
ATHLETICS





GIRLS' BASKETBALL TEAM

FIRST ROW—LEFT TO RIGHT: Rilla Hughes, Bertie Warren, and Betty Jo Midgett.
 SECOND ROW—LEFT TO RIGHT: Elsie Willis, De Ella Wade, *Captain*, and Pattie Jean Bell.
 THIRD ROW—LEFT TO RIGHT: Lena Willis, Nancy Derrickson, and June Jones.
 FOURTH ROW—LEFT TO RIGHT: Frieda Robinson and Mary Sue Tenney.
 FIFTH ROW: Jo-Jayne Windell.



BOYS' BASKETBALL TEAM

FIRST ROW—LEFT TO RIGHT: Berl Ray Lewis, Ray Lewis, Buck Matthews.
 SECOND ROW—LEFT TO RIGHT: Clarence Willis, Tarver McKnight, *Co-Captains*; J. D. Helms, Tommy Cordova.
 THIRD ROW—LEFT TO RIGHT: Bobby Bell, *Co-Captain*; J. G. Bennett.
 FOURTH ROW—LEFT TO RIGHT: Bobby Bowers, Mitchell Burge, Jimmy Rabon.



FEATURES





BAND AND MAJORETTES



MR. SAMMY GUTHRIE
Leader

FIRST ROW: Alvin Willis, Joe Morris, Douglas Reynolds, Bobby Martin, Buster Smith, and Donald Miller.

SECOND ROW: R. A. Williams, Bill Dodd, Harold Willis, Donald Norris, Buster Toms, Bobby Willis, Glenn Deibert, and Robert Yeager.

THIRD ROW: David Freshwater, Linwood Jones, Tommy Lewis, Richard Yeager, Suzanne Land, Mr. Sam Guthrie, Tommy Bennett, Linwood Willis, Larry Hall, Jimmy Smith, Perry Taylor, and Terry Norman.

FOURTH ROW: Harold Deibert, Paul Willis, Buck Matthews, Curtis Willis, Luther Norris, L. E. Wade, Ashton Willis, Fleetwood Adams, Shepard Sampson, Toby Guthrie, David Guthrie, Tommy Cordova.

FIFTH ROW: Rilla Hughes, Grace Piner, Claudette James.

SIXTH ROW: Lois Simpson, De Ella Wade, Peggy Leary.



HIGH SCHOOL GLEE CLUB

FIRST ROW: Sherry Willis, Jeane Farrior, Lois Webb, Mary Sue Tenny, Lucille Wright, Miss Mary Henri Wolfe, *Glee Club Director*, Barbara J. Willis, Shirley Farrior, Mildred Hill, Jane Ballou, and Shirley Willis.

SECOND ROW: Barbara Willis, Rilla Hughes, Lukevia Wade, Alice Mualem, Ida Broadhurst, Gloria Guthrie, Gloria Lewis, Marlene Kittrell, Jean Cunningham, Lena Willis, Bertie Warren, Marjorie Stone.

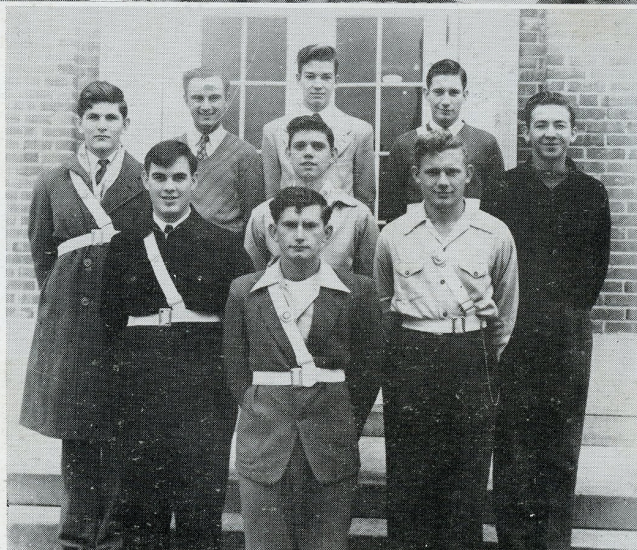
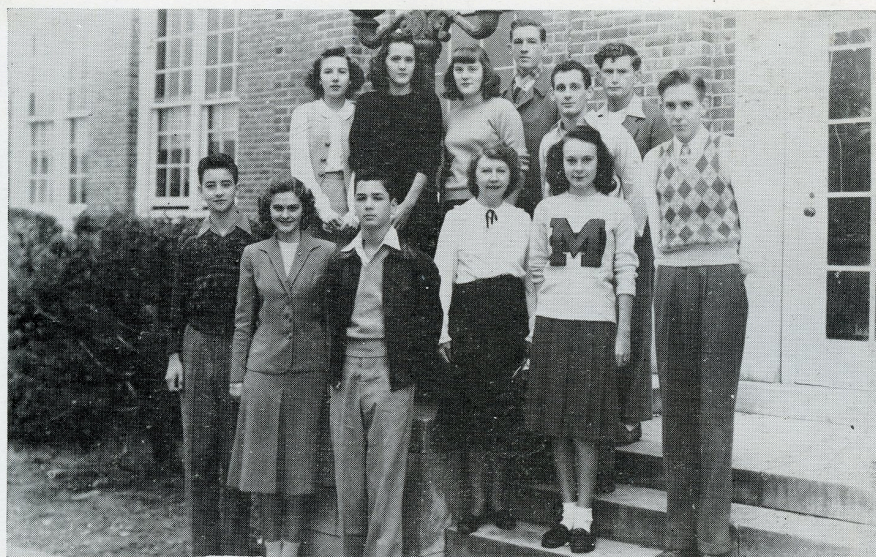
THIRD ROW: Colleen Swinson, Jean Davis, Frieda Robinson, Dawn Wetherington, Pattie Jean Bell, Evelyn Jenkins, Sue Willis, Margaret Mitchell, Caroline Willis, Charlene Salter, Jo-Jayne Windell, Benjie Swinson, Therese Whealton, Jerry Guthrie, Helen Guthrie.

LIBRARY CLUB

FIRST ROW: Robert Yeager, Gloria Guthrie, Jerry Nelson, Ida Broadhurst, Miss Sarah Hufham, *Sponsor*; Jane Howerton, Sue Willis, June Jones, Richard Yeager.

SECOND ROW: Carolyn Willis, Mary Ann Merrill, Frieda Robinson, Mary Lee Arthur, Elsie Willis, Margaret Edgerton, June Bloodgood, Ethel Smith, Bertie Warren, Mary Sue Tenney, Lukevia Wade, Suzanne Land.

THIRD ROW: Lucille Wright, Pattie Jean Bell, Ruth Guthrie, Anna Belle Hall, Sara Robinson, Helen Guthrie, Jean Cunningham, Arnette Garner, Sadie Davis, Kathryn Swindell, Judith Perry, Janice Lewis.



STUDENT COUNCIL

FIRST ROW: Charles Macy, Lois Webb, Perry Gorham, Mrs. Helen Baily, *Adult Advisor*; Marianne Pate, Sidney Lentz.

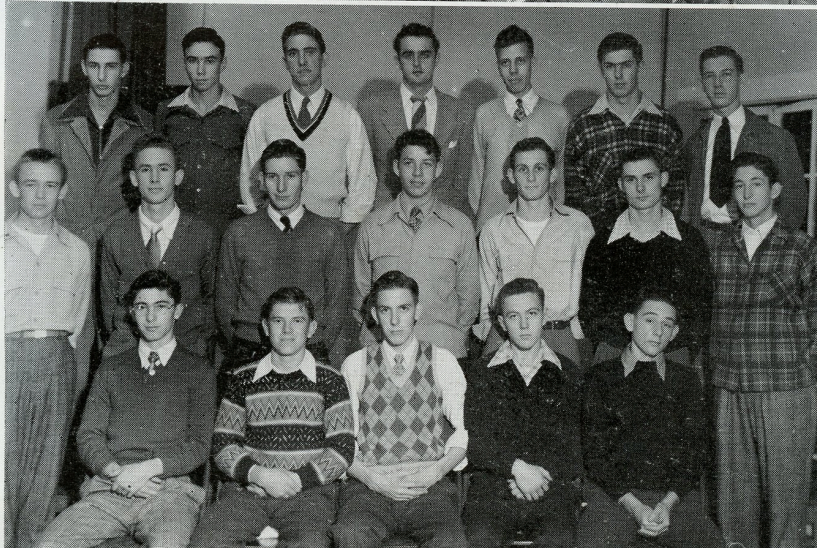
SECOND ROW: Jane Jordon, Elsie Willis, Ethel Smith, Bill Codwin, Buck Matthews, R. A. Williams.

SAFETY PATROLS

FIRST ROW: Sgt. R. A. Williams.

SECOND ROW: L. E. Wade, Harvey Gaskins, Tom Eaton.

THIRD ROW: Ashton Willis, Sherman Hawks, Guy Paul Dixon, Fleetwood Adams.



GIRLS' HI-Y

FIRST ROW: Rilla Hughes, Betsy Wade, Betsy Thornton, Marianne Pate, Janice Lewis, Gloria Lewis, Lukevia Wade.

SECOND ROW: Mary Sue Tenney, Bertie Warren, Edith Morse, Mary Ann Merrill, Lucille Wright, Ruth Guthrie, Mary Allen Miller, Marjorie Stone.

THIRD ROW: June Jones, De Ella Wade, Grace Piner, Lois Webb, Jane Howerton, Betty Jo Midgett, Peggy Leary, Nancy Derrickson.

BOYS' HI-Y

FIRST ROW: Tommy Cordova, Bill Marks, Sidney Lentz, Jimmy Smith, Berl Ray Lewis.

SECOND ROW: Willie Lewis, Tarver McKnight, Ray Lewis, Richard Spears, Buck Matthews, Shepard Sampson, Buddy Vick.

THIRD ROW: Edgar Simpson, Buddy Bailly, J. G. Bennett, Clarence Willis, Donald Davis, Bobby Robinson, Bill Godwin.



HOME EC. CLUB

FIRST ROW: J. McKnight, L. Wade, G. Bruton, B. Willis, B. Wade, A. Garner, M. Kittrell, J. Cunningham, J. Guthrie, E. Smith, S. Robinson, L. Simpson, J. Ballou, S. Willis.

SECOND ROW: H. Guthrie, N. Garner, B. Adams, J. Bloodgood, K. Swindell, R. Hughes, B. Swinson, B. Warren, N. Lewis, G. Oglesby, L. Griffin, M. Eaton, G. Piner, J. Nelson.

THIRD ROW: L. Willis, S. Oglesby, S. Willis, P. Bell, E. Willis, C. Willis, R. Willis, O. Willis, I. Willis, J. Jones, M. Arthur, J. Davis, V. Willis.

FOURTH ROW: B. Lee, M. Mitchell, M. Hill, L. Mitchell, H. Piner, I. Broadhurst, F. Robinson, G. Guthrie, M. Miller, G. Willis, Gr. Willis, G. Lewis.

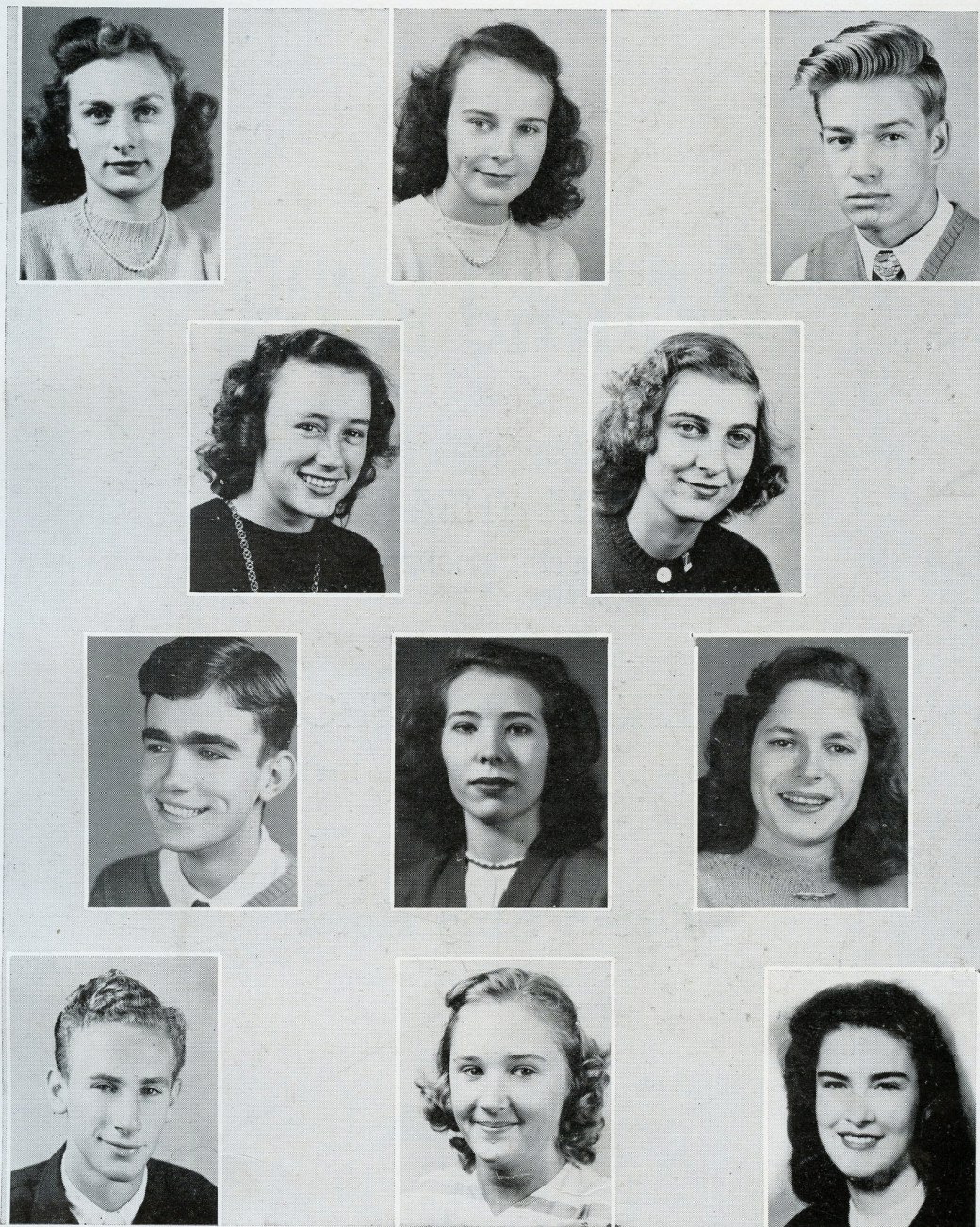
LAST ROW: E. Jenkins, A. Oglesby, J. Howerton, M. Leggett, Mrs. D. Cordova, *Adult Advisor*.

BETA CLUB

FIRST ROW: J. McKnight, L. Wade, J. Farrior, Mrs. J. Phillips, *Adult Advisor*; J. Guthrie, E. Morse, L. Wright.

SECOND ROW: A. Nelson, M. Mitchell, J. Jones, J. Windell, M. S. Tenney, M. Pate.

THIRD ROW: B. Godwin, S. Sampson, L. Webb, I. Long, G. Piner.



ANNUAL STAFF

FIRST ROW: Grace Piner, Marianne Pate, Guy Paul Dixon.

SECOND ROW: June Jones, Imogene Long.

THIRD ROW: Duffy Lee Paul, *Assistant Editor*; Mary Sue Tenney, *Editor-in-Chief*; Jeane Farrior, *Art Editor*.

FOURTH ROW: Tarver McKnight, Marjorie Stone, Helen Martin, *Adult Advisor*.

Meet the Gang

at

ATLANTIC BEACH

Enjoy the Surf and Cool breeze in summer

RODA THEATER

AIR CONDITIONED

Be Sure To Stop In A

REFRESHMENT SHOP

And Enjoy One Of Our Delicious Hot Dogs

Visit The Lounge In The

Ocean King Hotel

To Meet The Best People

Don't Miss The

Surf Club

at night

And you can't go to Atlantic Beach

Winter or Summer without spending time

at

The Idle Hour Amusement Center

THE CARTERET PUBLISHING COMPANY

Extends

Every Wish

to

Every Graduate

for

A Full, Useful Life



THE BEAUFORT NEWS — THE TWIN CITY TIMES

BEAUFORT, N. C.

MOREHEAD CITY, N. C.

A Woman Never Forgets A Man Who
Remembers!

B. A. Bell

Your Jeweler Since 1910 will help you remember

DIAMONDS—WATCHES—JEWELRY

CHINA—SILVER—CRYSTAL

B. A. BELL

Phone B-4451

Beaufort, N. C.

For Your Health's Sake

Drink More

DIXIE DAIRY PASTEURIZED MILK

Milk Is A Perfect Food

Ice Cream Is A Perfect Dessert

DIXIE DAIRY PRODUCTS

Roses 5-10-25 Store

"Your Local 5 & 10"



MOREHEAD CITY, NORTH CAROLINA

Morehead City Yacht Basin, Inc.

Distributors

Higgins Pleasure Craft

Cummins Diesel and Packard Marine Engines

Phone M-935-6

MOREHEAD CITY,

NORTH CAROLINA

Madix
Asphalt Roofing Company

◆
Morehead City

✧
JEFFERSON HOTEL

AL DEWEY, *Manager*

Phone 893-6

MOREHEAD CITY



The Dunbrik Company

of

Beaufort

manufacturers of

DUNBRIK - - - DUNSTONE

●
"AMERICA'S OUTSTANDING MASONRY"

Clyde Jones

Gas & Appliance Company

Sales PYROFAX Service

Phone M-582-7



28th Arendell

MOREHEAD CITY, N. C.

LEARY'S

Store for Men



MEN'S WEAR—KNOWN EVERYWHERE



Weldon's Jewelers

"Your Friendly Jeweler"

Next to City Theater



Jo-House Drug Store

Phone B-333-1



BEAUFORT, N. C.

“Two Great Names”

FRIGIDAIRE

made by

GENERAL MOTORS

The Headquarters For
FRIGIDAIRE APPLIANCES

And

FROZEN FOODS

**Sound Appliance
Company**

◆
W. M. B. L.

Carteret County's

One & Only

Radio Station

740 On Your Dial
◆

◆
Dom's Place

Sandwich Shop

“Specializing in Hamburgers”

Try Our Steak Sandwiches

1403 Bridges Street

MOREHEAD CITY, N. C.
◆

MASONS
HOME FURNISHINGS

FELTONS

Beaufort, N. C.

LOFTIN MOTOR CO.

Sales & Service

Beaufort, N. C.

CITY APPLIANCE CO.

Phone B-325-1

Beaufort, N. C.

Chalk & Gibbs

●
MOREHEAD CITY, N. C.

S. W. DRUG STORE

●
MOREHEAD CITY, N. C.

THE BOOT SHOP

*"Names You Know—
Shoes You Love"*

Marque-Jacqueline-Connie

MOREHEAD CITY, N. C.

City & Royal Theatres

"The Best In Pictures"

●
MOREHEAD CITY, N. C.

Croatan Frozen Food, Co., Inc.

FREEZING

COLD STORAGE

Cap't Bill's Waterfront Cafe

The Best in Seafood, Steaks,
Chops, Chicken

Member American Restaurant Asso.

"An Approved Restaurant"

"on the Waterfront"

Phone 585-1

MOREHEAD CITY, N. C.

The

JEFFERSON RESTAURANT

Leased and Operated by

Sanitary Fish Market & Restaurant

The

FIRST CITIZEN'S BANK

and

TRUST COMPANY

Recapping and Vulcanizing
NEW TIRES

TIRE SERVICE COMPANY

MOREHEAD CITY, N. C.

Phone M-549-1
JIM MORRILL, *Mgr.*

◆

The
**MOREHEAD CITY
GARMENT COMPANY**

MOREHEAD CITY, N. C.

◆

Davis Brothers

Dry Goods & Shoes

◆

BEAUFORT, N. C.

**SOUND CHEVROLET
COMPANY**

Parts Department—Phone M-562-1
Service Department—Phone M-549-6

MOREHEAD CITY, N. C.

WHALEY'S

TEXACO STATION

Corner 24 & Bridges

MOREHEAD CITY, N. C.

◆

R. T. WILLIS & SONS

*"Headquarters for Garden
and Flower Seeds"*

◆

MOREHEAD CITY, N. C.

Charles L. Nelson

MACHINE SHOP — RAILWAYS

Electric & Acetylene

Welding

Fisher Street

Phone M-944-6

GARNER'S

GULF SERVICE STATION

◆

Phone M-369-1
MOREHEAD CITY, N. C.

R. & N. FURNITURE COMPANY

Dealers of

Bendix Home Laundries

and

Kresky Floor Furnaces

Bridges Street

Phone 420-1

MOREHEAD CITY, N. C.

◆
Cherry's Market

"On the Corner"

MOREHEAD CITY, N. C.
◆

**MOREHEAD CITY DRUG
COMPANY**

MOREHEAD CITY, N. C.
◆

**JOHNSON SAUNDERS
DRY CLEANING COMPANY**

◆
Dial B-447-1
BEAUFORT, N. C.

D. B. Webb

CLOTHES for the FAMILY

◆
"Webbs since 1883"

Willis Auto Supply Co.

Auto Accessories

and

Electrical Supplies

Phone M-470-1
906 Arendell Street

DEE GEE'S SHOPPE

Unusual Gifts

Kodak Finishing

"At The Sign of The Anchor"

Phone M-499-1

◆
Hills

"Known For Good Clothes"

Morehead City

New Bern
◆

<p>G. & W. Children's Shop <i>"Everything for the Children"</i> Phone 459-1</p>	<p>Birthday & Wedding Cakes Our Specialty CITY BAKERY Phone 533-1</p>
<p>Frank Reams's Grocery Morehead City</p>	<p>WILBUR V. GARNER SANDWICHES <i>"Tom's Toasted Peanuts"</i> Candies & Peanut Butter</p>
<p>HOTEL FORT MACON Phone 333-1</p>	<p>HARDWARE - APPLIANCES - FURNITURE AT YOUR GE-APPLIANCE STORE <i>"Where Seeing is the way to Better Buying"</i> HUNTLEY-PREST CO. MOREHEAD CITY</p>
<p>T. D. Lewis Machine Shop GENERAL MACHINERY Phone 585-6 Morehead City</p>	<p>BEAUFORT DEPT. STORE BEAUFORT, N. C.</p>
<p>MERRILL'S BEAUFORT, N. C.</p>	<p>MOREHEAD CITY FLORAL CO. Phone M-558-1</p>
<p>SEASHORE TAXI Phone 574-1 Morehead City</p>	<p>Matthis Radio Service Company Phone 404-1 104 Bridges St. MOREHEAD CITY</p>
<p>LEN'S SHOE SHOP Morehead City</p>	<p>S. A. CHALK, JR. <i>Mutual Insurance Agency</i> First Citizens Bank Building Telephone M-836-2 Morehead City, North Carolina</p>
<p>ROYAL SODA SHOP MARVIN WILLIS, JR., Mgr.</p>	<p>THEODORE ECONOMON</p>

◆

The Vogue

*We sell
Everything Milady wears,
including shoes.*

BEAUFORT, N. C.

◆

DALE PAINT & DECORATING COMPANY

2101 Bridges Street
MOREHEAD CITY, N. C.
Phone M-813-1

FRED PHILLIPS & SONS

GARAGE & PARTS STORE

Washing

Towing

Greasing

Welding

Overhauling

406 Bridges Street Morehead City, N. C.

CITY & SERVICE CAB CO.

Phone M-557-1 (City Cab)

Phone M-986-6 (Service Cab)

MOREHEAD CITY, N. C.

BEAUFORT HARDWARE CO.

Phone B-468-6

BEAUFORT, N. C.

FOX-DOWNUM CO.

BEAUFORT, N. C.

L. GUTHRIE

MEATS - - - - GROCERIES

Fresh Fruits & Vegetables

Phone M-462-7

Red Bird Taxi Co.

◆

Phone M-451-1

VERNON GUTHRIE, Mgr.

THE GALLEY

Speciality — Good Food

MOREHEAD CITY, N. C.

MAC'S PLACE

MOREHEAD CITY, N. C.

SPONSORS

George Ball
George W. Dill
Mrs. Blanda L. McLohn
Miss Lela Lee
Jesse Lefer
Bob Williams
Dalton Adams
James B. Williams
Walter Morris
A. N. Murphy
Mr. and Mrs. Andrew Allen Davis
Mr. and Mrs. Robert Seamon
Rev. J. V. Axtell
S. W. Thompson, M. D.
M. B. Morey, M. D.
S. W. Hatcher, M. D.
Bill's Song Shop

Famise Corset Shop
G. T. Windell
Floyd Chadwick, Jr.
Floyd Jones
A Friend
Alvah Hamilton
Harvey Hamilton, Jr.
George H. McNeil
Miss Sara Hufham
Mrs. R. W. Wallace, Jr.
Mrs. J. B. Sawyer
Aycock Brown
Mrs. Fred G. Lewis
Early Lupton
Mrs. Julia Tenney
Fran-Kay Studio
Harry Stalcup
Mr. and Mrs. Bill Moore

The staff wishes to thank the following for their invaluable assistance in making the publication of this 1948 SANDEFIDLER possible: GUY PAUL DIXON, MISS SARA HUFHAM, and all feature writers.

LIFE & CASUALTY
Life Insurance Company

THEODORE PHILLIPS
Agent

Autographs

Paul Ray Lewis
Bob Robinson

Autographs

